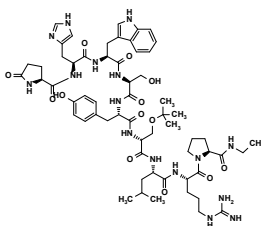


Hormone - GnRH

Buserelin

HS-2005

$C_{60}H_{86}N_{16}O_{13}$
MW 1239.5
57982-77-1

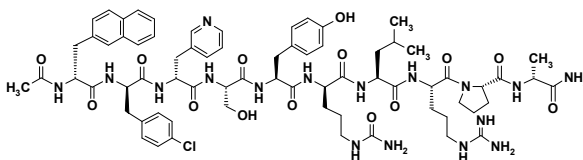


| | GBP (£) |
|------|---------|
| 1mg | 63 |
| 5mg | 203 |
| 10mg | 343 |

Cetrorelix

HS-2008

$C_{70}H_{92}ClN_{17}O_{14}$
MW 1431.1
120287-85-6

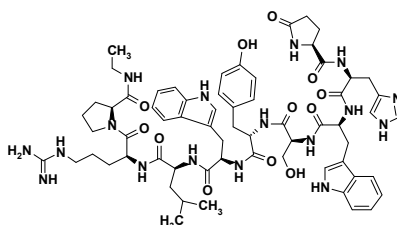


| | GBP (£) |
|------|---------|
| 1mg | 95 |
| 5mg | 339 |
| 10mg | 583 |

Deslorelin

HS-2009

$C_{64}H_{83}N_{17}O_{12}$
MW 1282.5
57773-65-6

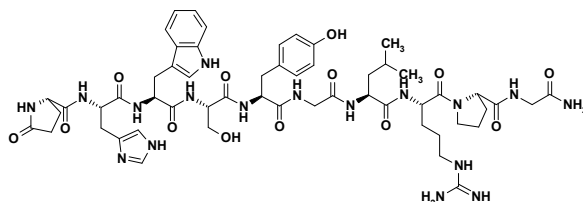


| | GBP (£) |
|------|---------|
| 1mg | 63 |
| 5mg | 203 |
| 10mg | 343 |

Gonadorelin

HS-2014

$C_{55}H_{75}N_{17}O_{13}$
MW 1182.3
33515-09-2

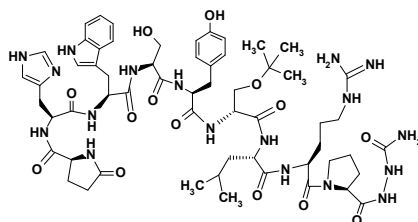


| | GBP (£) |
|------|---------|
| 1mg | 34 |
| 5mg | 80 |
| 10mg | 125 |

Goserelin

HS-2015

$C_{59}H_{84}N_{18}O_{14}$
MW 1269.4
65807-02-5

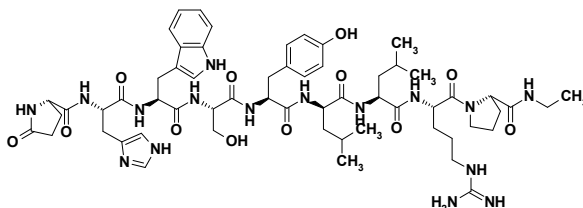


| | GBP (£) |
|------|---------|
| 1mg | 34 |
| 5mg | 80 |
| 10mg | 125 |

Leuprolide

HS-2016

$C_{59}H_{84}N_{18}O_{12}$
MW 1209.4
53714-56-0



| | GBP (£) |
|------|---------|
| 1mg | 45 |
| 5mg | 124 |
| 10mg | 204 |

