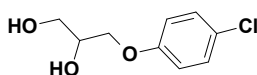


Immunology - Antibacterials

Chlorphenesin

HS-0080

$C_9H_{11}ClO_3$
MW 202.6
104-29-0

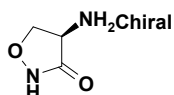


| GBP (£) | |
|---------|----|
| 1mg | 22 |
| 5mg | 26 |
| 10mg | 31 |

Cycloserine

HS-0079

$C_3H_6N_2O_2$
MW 102.1
68-41-7

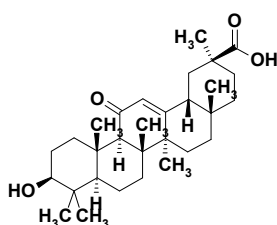


| GBP (£) | |
|---------|----|
| 1mg | 22 |
| 5mg | 26 |
| 10mg | 31 |

Enoxolone

KS-1262

$C_{30}H_{46}O_4$
MW 470.7
471-53-4

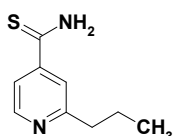


| GBP (£) | |
|---------|----|
| 1mg | 22 |
| 5mg | 26 |
| 10mg | 31 |

Protionamide

KS-1282

$C_9H_{12}N_2S$
MW 180.3
14222-60-7

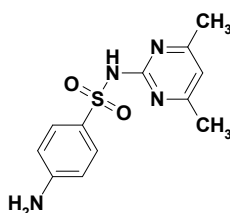


| GBP (£) | |
|---------|----|
| 1mg | 25 |
| 5mg | 39 |
| 10mg | 54 |

Sulfamethazine

MS-1576

$C_{12}H_{14}N_4O_2S$
MW 278.3
57-68-1



| GBP (£) | |
|---------|----|
| 1mg | 22 |
| 5mg | 26 |
| 10mg | 31 |