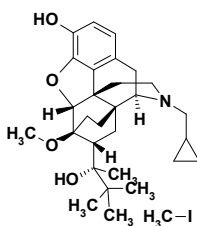


## Neurology - Antidependency

### Buprenorphine Methiodide

#### HS-0025

$C_{30}H_{44}INO_4$   
MW 609.6

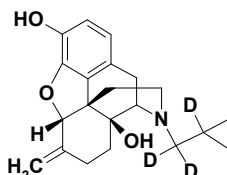


GBP (£)	
1mg	63
5mg	203
10mg	343

### D3-Nalmefene

#### HS-0071

$C_{21}H_{22}NO_3D_3$   
MW 342.5

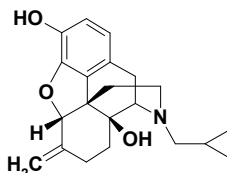


GBP (£)	
1mg	250
5mg	998
10mg	

### Nalmefene

#### HS-0038

$C_{21}H_{25}NO_3$   
MW 339.4  
55096-26-9

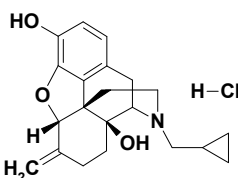


GBP (£)	
1mg	28
5mg	54
10mg	80

### Nalmefene hydrochloride

#### HS-0037

$C_{21}H_{26}ClNO_3$   
MW 375.9  
58895-64-0

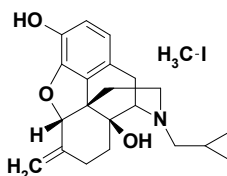


GBP (£)	
1mg	25
5mg	39
10mg	54

### Nalmefene methiodide

#### HS-0039

$C_{22}H_{28}INO_3$   
MW 481.4

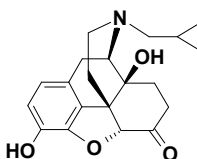


GBP (£)	
1mg	95
5mg	339
10mg	583

### Naltrexone base anhydrous

#### HS-0002

$C_{20}H_{23}NO_4$   
MW 341.4  
16590-41-3



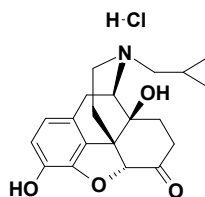
GBP (£)	
1mg	25
5mg	39
10mg	54

## Neurology - Antidependency

### Naltrexone hydrochloride

#### HS-0003

$C_{20}H_{24}ClNO_4$   
MW 377.9  
16676-29-2

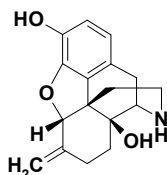


	GBP (£)
1mg	22
5mg	26
10mg	31

### Nornalmeffene

#### HS-0050

$C_{17}H_{19}NO_3$   
MW 285.3  
42971-33-5

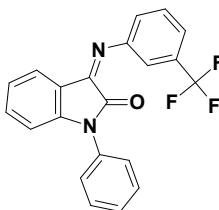


	GBP (£)
1mg	150
5mg	573
10mg	995

### SNAP 37889

#### 11L-312S

$C_{21}H_{13}F_3N_2O$   
MW 366.3

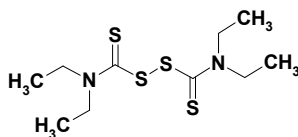


	GBP (£)
1mg	23
5mg	31
10mg	39

### Tetraethylthiuram disulfide

#### HS-0057

$C_{10}H_{20}N_2S_4$   
MW 296.5  
97-77-8



	GBP (£)
1mg	22
5mg	26
10mg	31