

Reproduction - Female

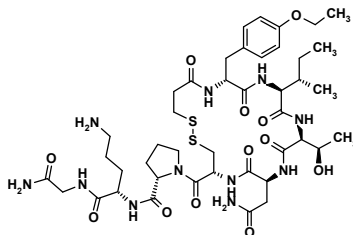
Atosiban

HS-2003

$C_{43}H_{67}N_{11}O_{12}S_2$

MW 994.2

90779-69-4



GBP (£)

1mg 23

5mg 31

10mg 39

tocolytic

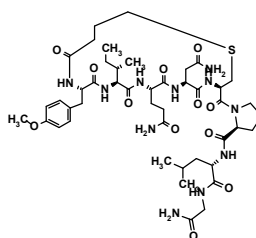
Carbetocin

HS-2007

$C_{45}H_{69}N_{11}O_{12}S$

MW 988.2

37025-55-1



GBP (£)

1mg 34

5mg 80

10mg 125

Postpartum haemorrhage

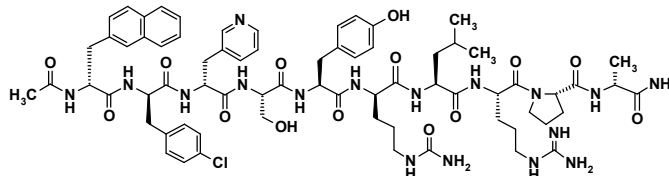
Cetrorelix

HS-2008

$C_{70}H_{92}ClN_{17}O_{14}$

MW 1431.1

120287-85-6



GBP (£)

1mg 95

5mg 339

10mg 583

hormone responsive cancer

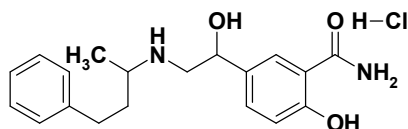
Labetalol hydrochloride

SS-4219

$C_{19}H_{25}ClN_2O_3$

MW 364.9

32780-64-6



GBP (£)

1mg 22

5mg 26

10mg 31

antihypertensive, pregnancy induced hypertension

Reproduction - Female

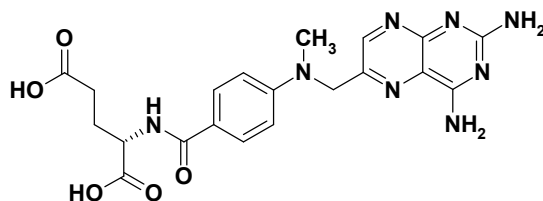
Methotrexate

KS-5093

$C_{20}H_{22}N_8O_5$

MW 454.4

59-05-2



GBP (£)

1mg 22

5mg 26

10mg 31

anticancer, arthritis, psoriasis, medical abortion

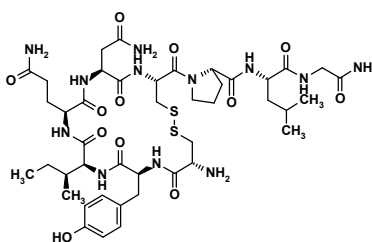
Oxytocin

HS-2021

$C_{43}H_{66}N_{12}O_{12}S_2$

MW 1007.2

50-56-6



GBP (£)

1mg 25

5mg 39

10mg 54

hormone, uterotonic