

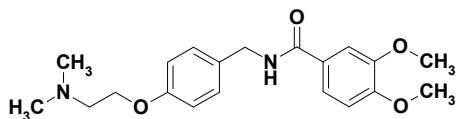
## Wellbeing - Gastroprokinetics

### Itopride hydrochloride

#### KS-5067

C<sub>20</sub>H<sub>27</sub>ClN<sub>2</sub>O<sub>4</sub>

MW 394.9



H-Cl

GBP (£)	
1mg	22
5mg	26
10mg	31

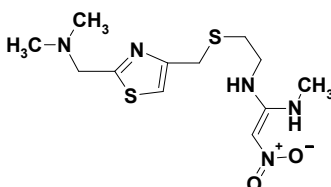
### LY-139037, Nizatidine

#### HS-0083

C<sub>12</sub>H<sub>21</sub>N<sub>5</sub>O<sub>2</sub>S<sub>2</sub>

MW 331.5

76963-41-2



GBP (£)	
1mg	22
5mg	26
10mg	31

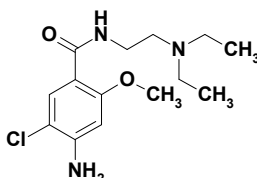
### Metaclopramide

#### KS-5055

C<sub>14</sub>H<sub>22</sub>ClN<sub>3</sub>O<sub>2</sub>

MW 299.8

364-62-5



GBP (£)	
1mg	22
5mg	26
10mg	31

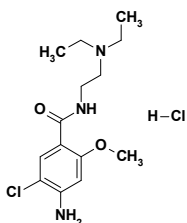
### Metoclopramide hydrochloride

#### HS-0006

C<sub>14</sub>H<sub>23</sub>Cl<sub>2</sub>N<sub>3</sub>O<sub>2</sub>

MW 336.3

54143-57-6



GBP (£)	
1mg	22
5mg	26
10mg	31

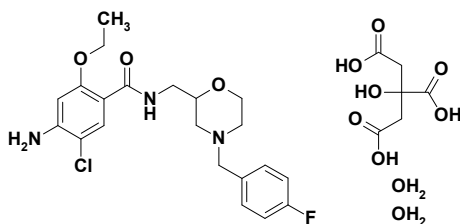
### Mosapride citrate dihydrate

#### KS-1180

C<sub>27</sub>H<sub>37</sub>ClFN<sub>3</sub>O<sub>12</sub>

MW 650.1

156925-25-6



GBP (£)	
1mg	25
5mg	39
10mg	54

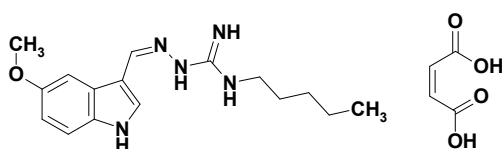
### Tegaserod maleate

#### KS-1118

C<sub>20</sub>H<sub>27</sub>N<sub>5</sub>O<sub>5</sub>

MW 417.5

189188-57-6



GBP (£)	
1mg	23
5mg	31
10mg	39